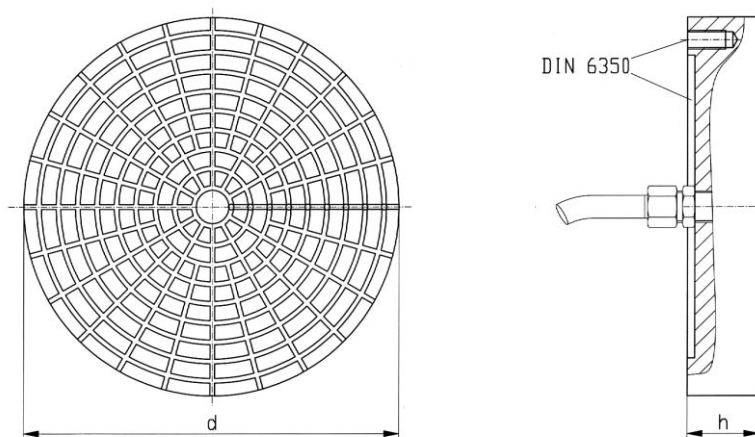


Circular grid type chucks

These circular chucks are ideal for disk or circular type workpieces for machining i.e. on a lathe. They are used in glass and polymer processing industries, but metal machining is of course also possible.



Supply includes:

- Seal 10m (h=38mm)
or 20m (from h=48mm)
- 4 stops

Aluminium

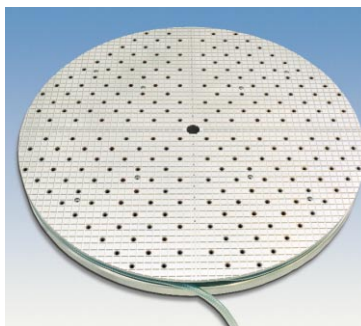
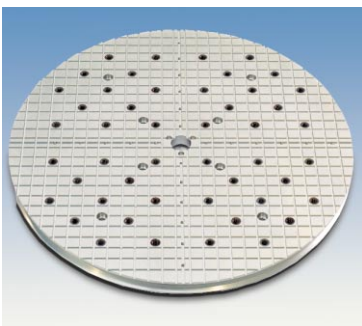
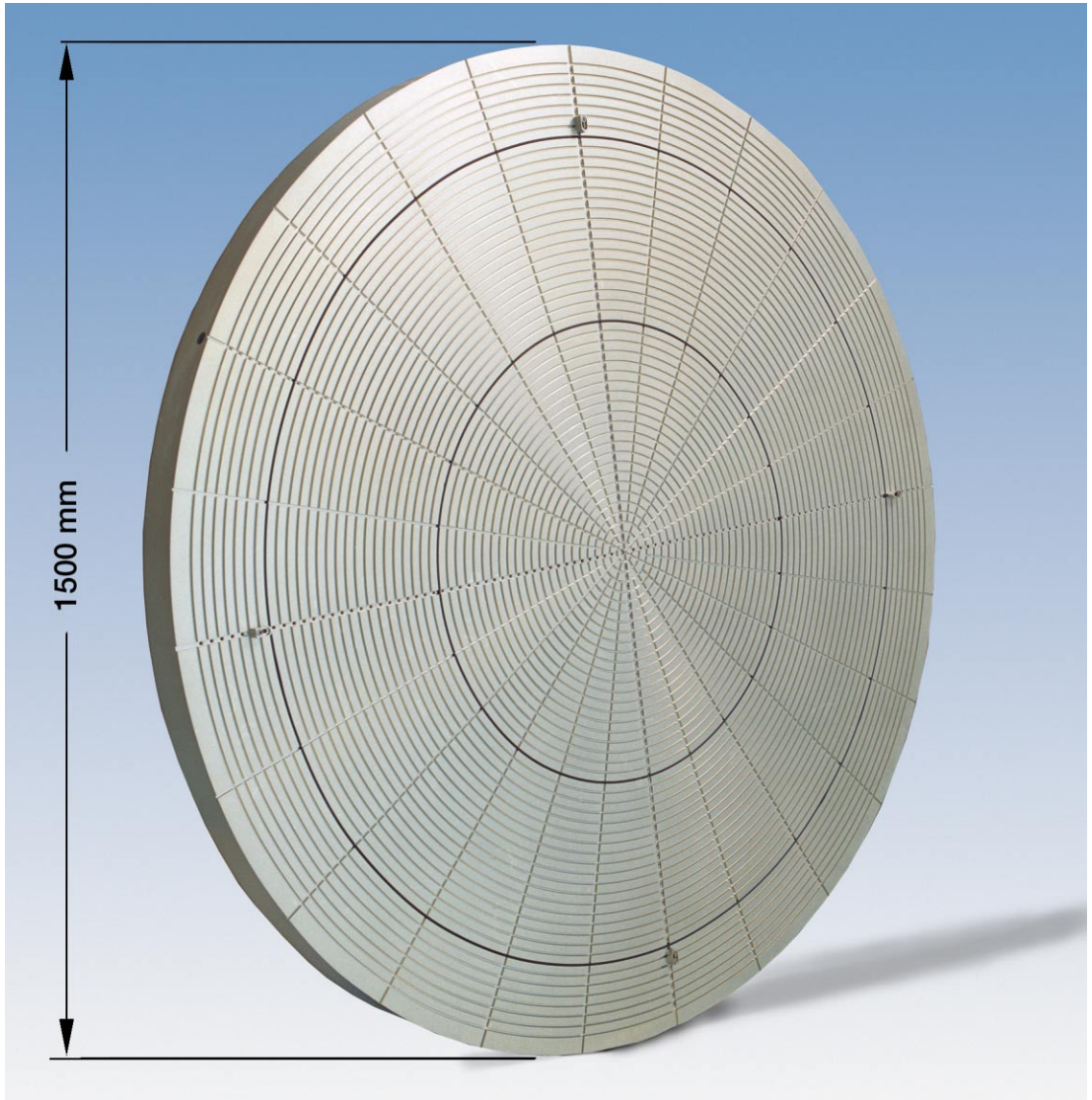
No.	Grid dim.	Øxh	kg
80836	10,0	ø100x38	1
80837	10,0	ø125x38	1
80838	10,0	ø160x38	2
80839	10,0	ø200x38	3
80840	10,0	ø250x38	5
80841	12,5	ø315x48	5
80842	12,5	ø400x48	16
80843	12,5	ø500x58	31
80844	12,5	ø630x58	49

Steel

No.	Grid dim.	Øxh	kg
80845	10,0	ø100x38	2
80846	10,0	ø125x38	3
80847	10,0	ø160x38	6
80848	10,0	ø200x38	9
80849	10,0	ø250x38	14
80850	12,5	ø315x48	14
80851	12,5	ø400x48	47
80852	12,5	ø500x58	89
80853	12,5	ø630x58	142

Special dimensions available on request!

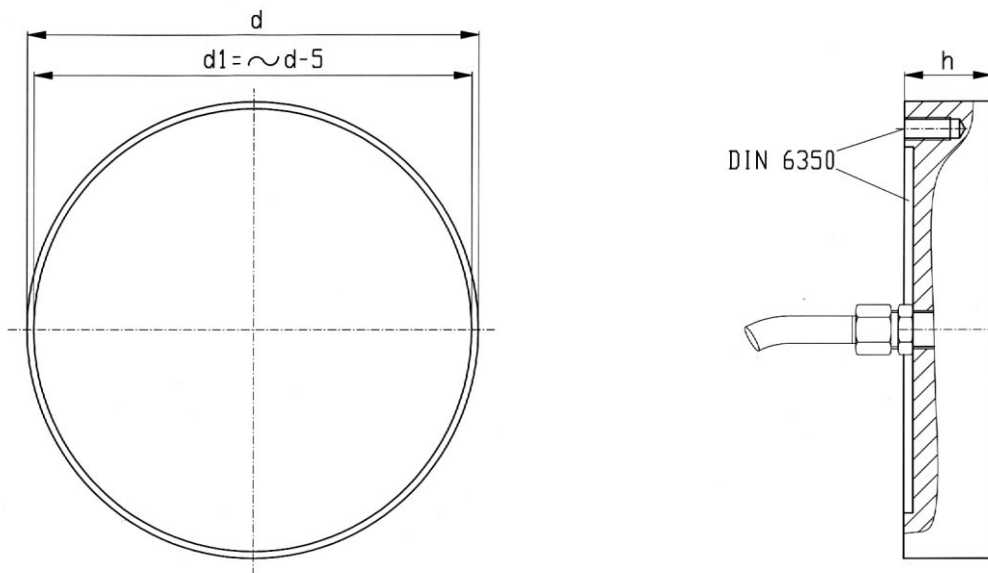
Grid type vacuum chucks



Circular grid chucks, special dimensions and specially designed. Other circular chucks are shown on page 19 and 75

Circular sinter metal chucks

The insert made of sinter bronze guarantees even and accurate clamping of different workpieces i.e. optical glass, wafer etc.
Also available in METAPOR® see page 110



Aluminium

No.	Øxh	kg
80854	ø100x38	0,8
80855	ø125x38	1,3
80856	ø160x38	2,0
80857	ø200x38	3,0
80858	ø250x38	5,0
80859	ø315x48	10,0
80860	ø400x48	16,0
80861	ø500x58	31,0
80862	ø630x58	49,0

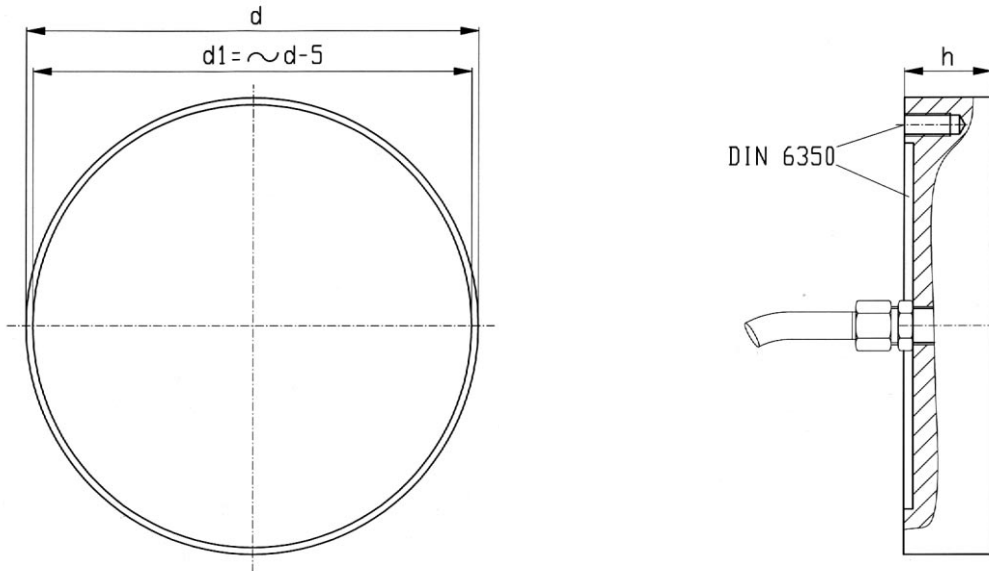
Steel

No.	Øxh	kg
80863	ø100x38	2,3
80864	ø125x38	3,5
80865	ø160x38	6,0
80866	ø200x38	9,0
80867	ø250x38	14,5
80868	ø315x48	29,0
80869	ø400x48	47,0
80870	ø500x58	89,0
80871	ø630x58	142,0

Special dimensions available on request!

WITTE - METAPOR[®]-circular vacuum chucks

Vacuum-circular chuck with an air through-flow, fine porous and homogenous insert. Especially for tension free clamping of very thin foils or similar materials. The insert can be produced in any of the different WITTE - METAPOR[®] materials, technical data can be found on pages 110/115. These materials can also be used for air film glide handling equipment using the standard quality BF 100.



Example: Aluminium with BF-100

No.	Øxh	kg
90962	ø100x38	0,8
90964	ø125x38	1,3
90965	ø160x38	2,0
90966	ø200x38	3,0
90967	ø250x38	5,0
90968	ø315x48	10,0
90969	ø400x48	16,0
90970	ø500x58	31,0
90971	ø630x58	49,0

Example: Steel with BF-100

No.	Øxh	kg
90972	ø100x38	2,3
90973	ø125x38	3,5
90974	ø160x38	6,0
90975	ø200x38	9,0
90976	ø250x38	14,5
90977	ø315x48	29,0
90978	ø400x48	47,0
90979	ø500x58	89,0
90980	ø630x58	142,0

Special dimensions available on request!